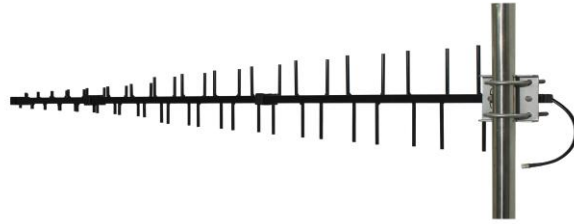
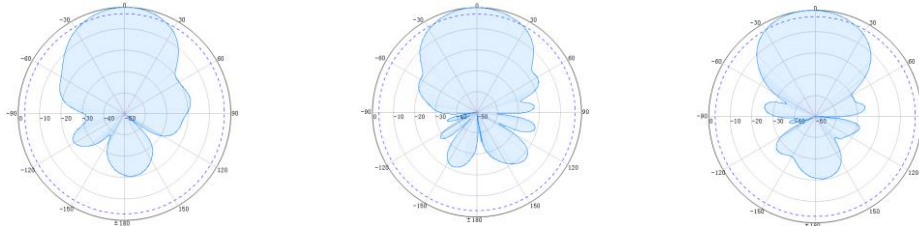


Wide Band Yagi Directional Antenna (617 – 960 MHz / 1710-2700 MHz)
 Model: SP-YAGI-14W



Frequency Range, MHz	617-960	1710-2700	3300-4000
Gain, dBi	12	14	12
VSWR	≤2.5	≤2.0	≤2.0
Polarization	Vertical		
Front to Back Ratio, dB	≥24	≥24	≥13
Horizontal Beamwidth	55°	42°	36°
Vertical Beamwidth	46°	34°	32°
Input Impedance	50 Ω		
Max. Input Power	50 W		
Lightning Protection	DC Ground		
Mechanical Specifications			
Connector	N-Female		
Dimensions	50.39 Inches / 1280 mm		
Weight	1.6 kg		
Reflector Material	Aluminum		
Rated Wind Velocity	210 km/h		
Operating Temperature	-40°C to +65 °C		
Mounting Pole	Ø38-Ø52 mm		

H-Plane



V-Plane

